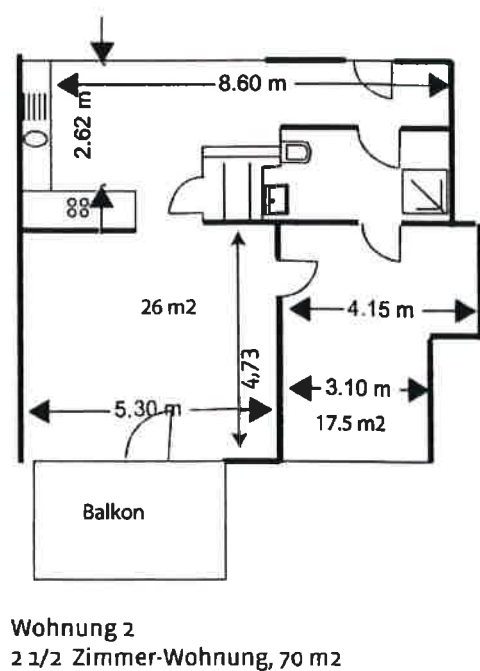
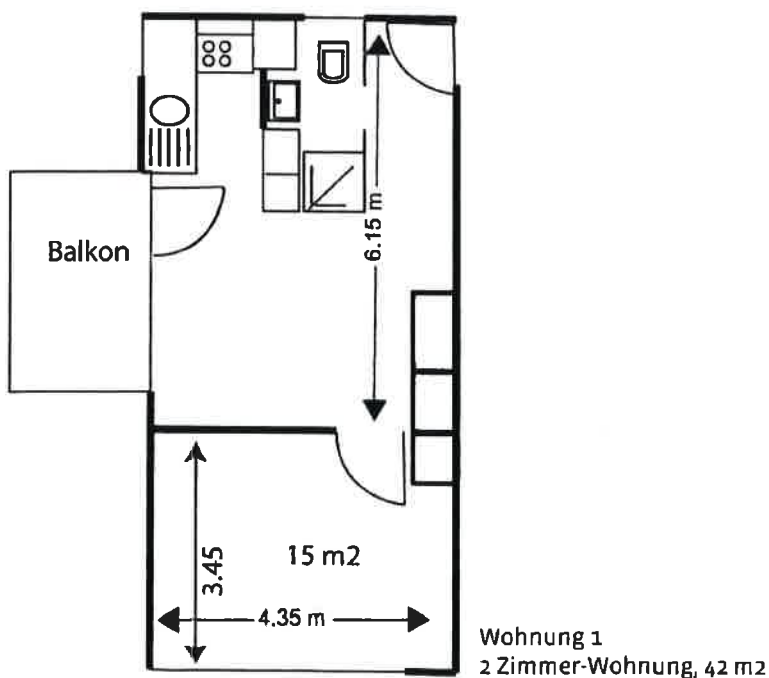
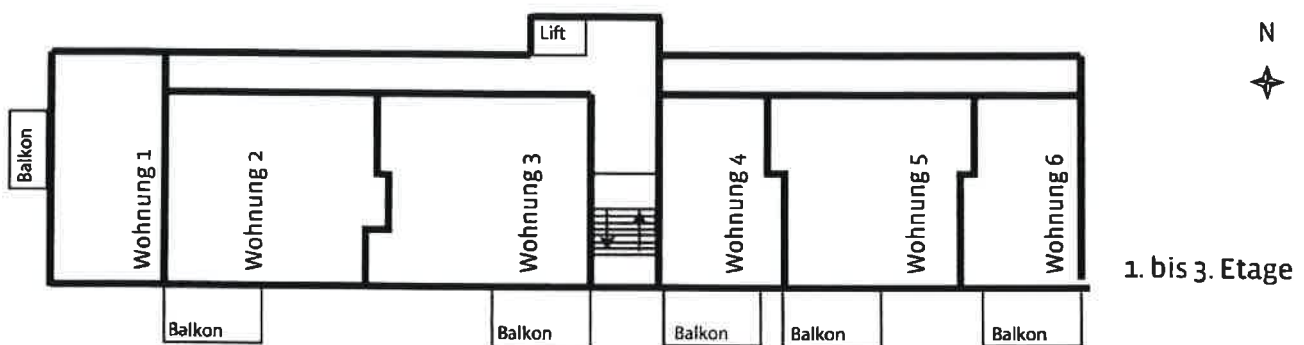
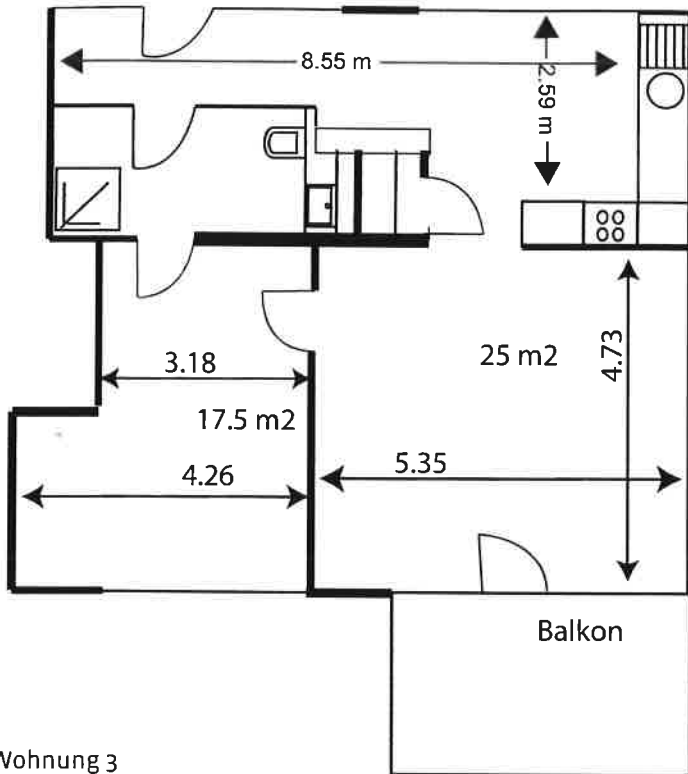




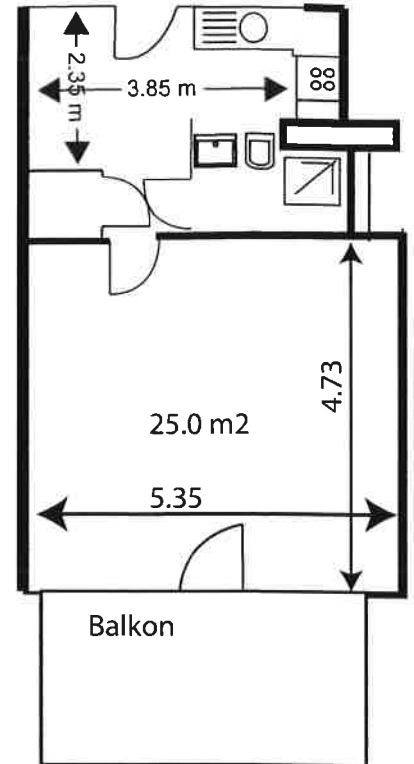
Stadt  
Schlieren

# Betreutes Wohnen Mühleackerstrasse 15 Wohnungsgrundrisse

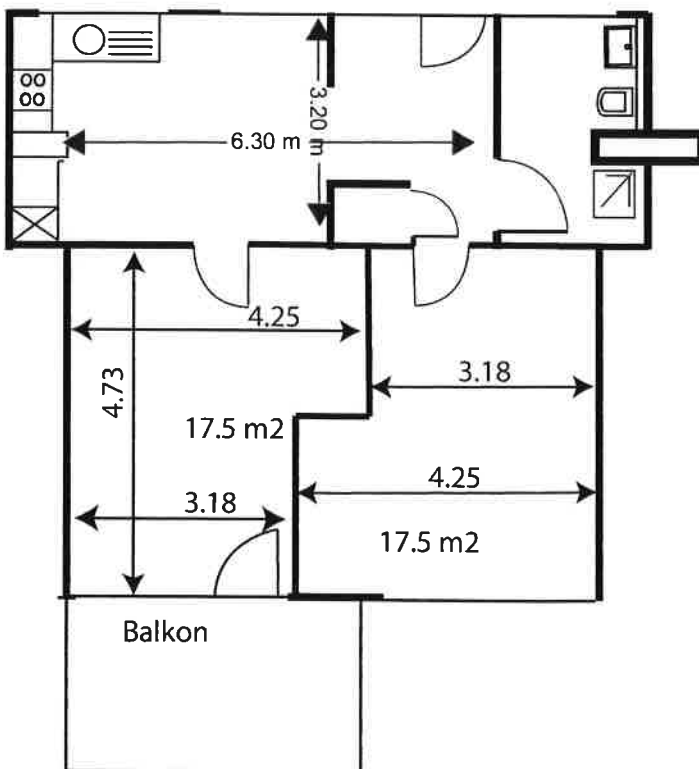




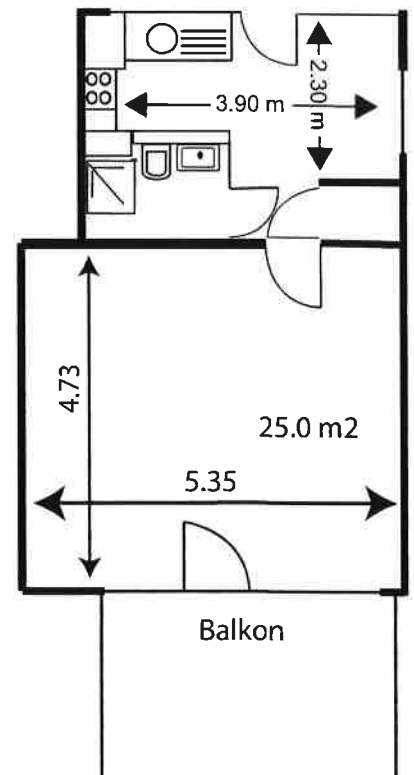
Wohnung 3  
2 1/2 Zimmer-Wohnung, 70 m<sup>2</sup>



Wohnung 4  
1 1/2 Zimmer-Wohnung, 39 m<sup>2</sup>

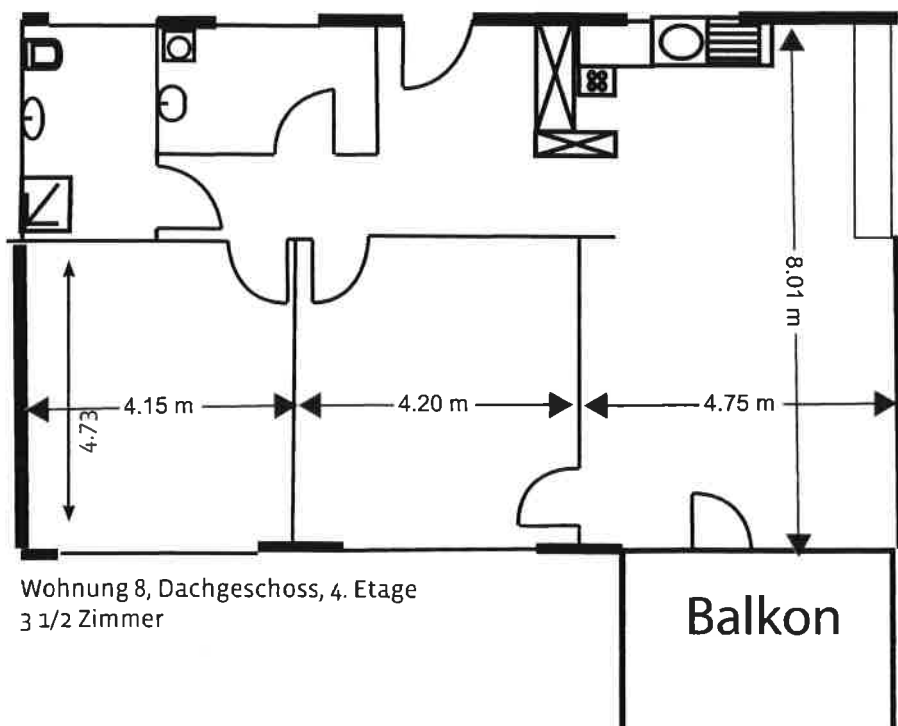
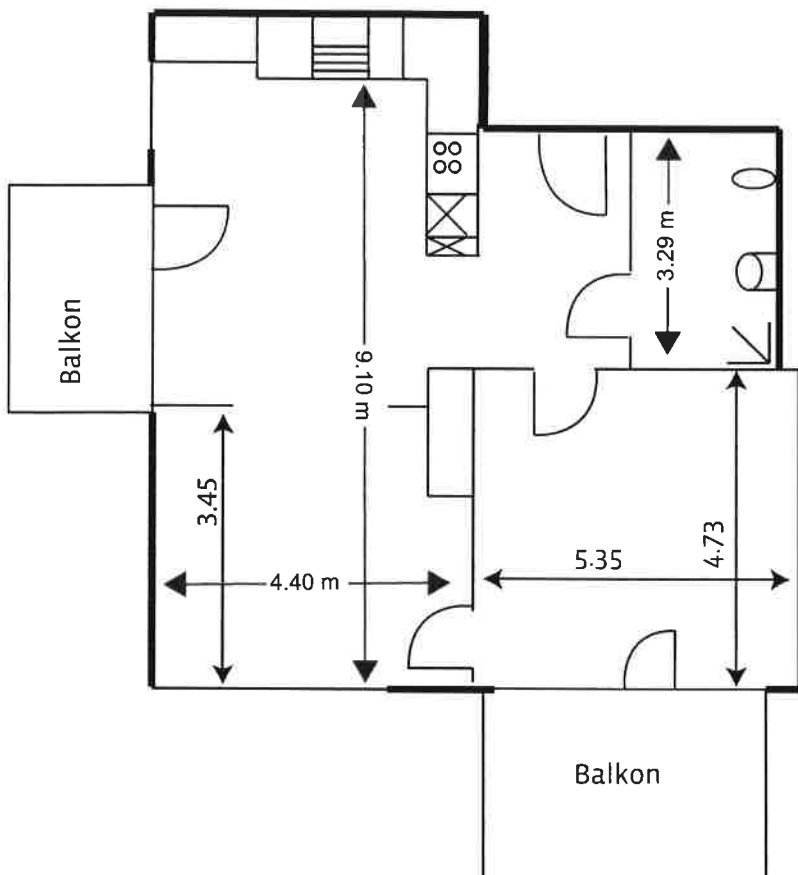


Wohnung 5  
2 1/2 Zimmer-Wohnung, 62 m<sup>2</sup>



Wohnung 6  
1 1/1 Zimmer-Wohnung, 39 m<sup>2</sup>

Wohnung 7, Dachgeschoss, 4. Etage  
2 1/2 Zimmer



Wohnung 8, Dachgeschoss, 4. Etage  
3 1/2 Zimmer